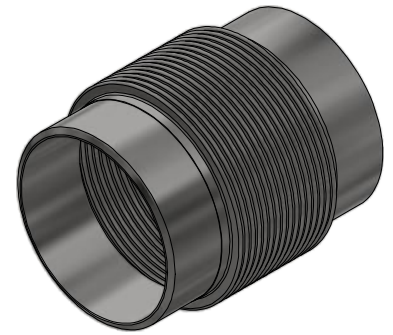
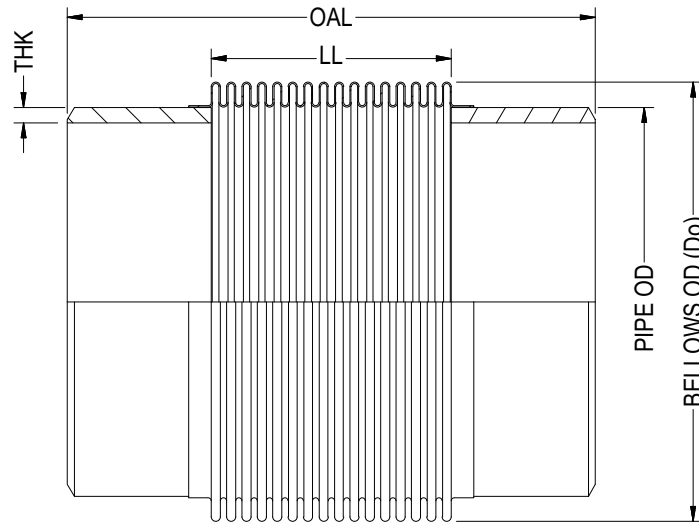


# TYPE SU-00



ISOMETRIC VIEW

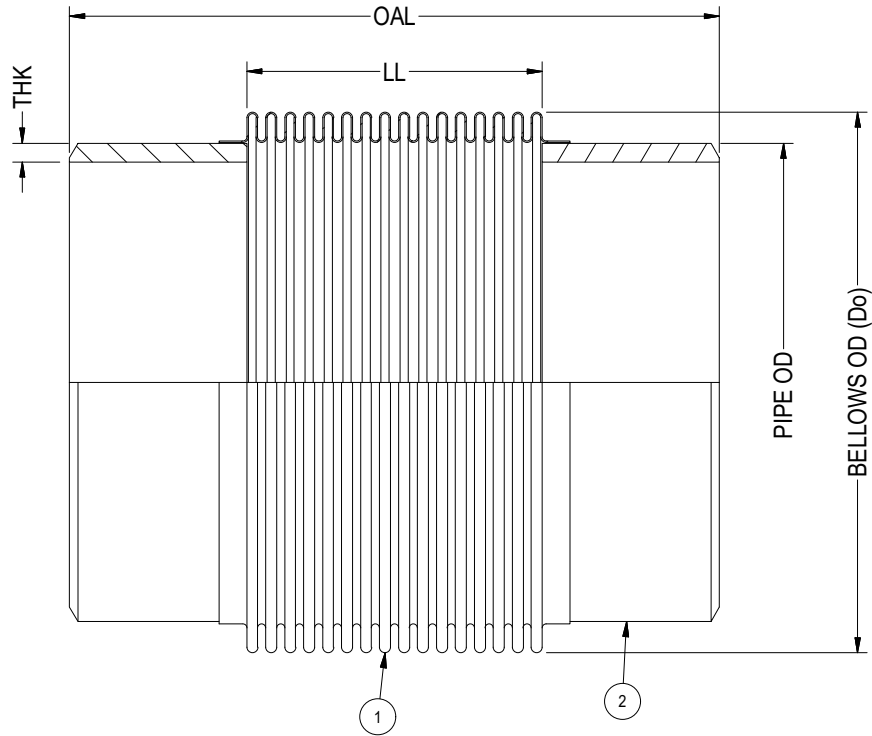
PIPE SIZE	BELLOWS OD (Do)	LIVE LENGTH (LL)	OVERALL LENGTH (OAL)
0.75	1.27	1.33	6.00
1	1.75	2.00	8.00
1-1/2	2.50	2.00	8.00
2	3.10	2.00	8.00
2	3.10	6.00	12.00
2-1/2	3.70	2.00	8.00
2-1/2	3.70	6.00	12.00
3	4.40	2.00	8.00
3	4.40	6.00	12.00
4	5.36	2.50	8.00
4	5.36	5.50	12.00
4	5.15	9.00	15.00
5	6.55	5.50	12.00
6	7.70	3.00	9.00
6	7.63	5.50	12.00
8	10.10	4.13	10.00
8	10.10	5.50	12.00
10	12.00	2.00	8.00
10	12.00	5.50	12.00

PIPE SIZE	BELLOWS OD (Do)	LIVE LENGTH (LL)	OVERALL LENGTH (OAL)
12	14.80	6.00	12.00
12	14.00	8.00	14.00
12	14.30	13.50	20.00
14	16.30	1.25	7.00
14	16.00	4.50	10.00
14	15.75	13.00	19.00
16	17.75	8.00	14.00
16	17.75	13.50	20.00
18	20.20	4.00	10.00
18	20.20	10.00	16.00
18	20.20	13.00	19.00
20	22.00	4.00	10.00
20	22.25	4.50	10.00
20	21.91	9.00	15.00
20	21.75	13.50	20.00
24	25.90	4.50	10.00
24	26.00	12.00	18.00
24	26.00	13.00	19.00
24	25.75	20.00	26.00

**NOTES:**

1. PIPE WELD END WALL THICKNESS IS BASED ON STD./SCH, ALTERNATIVE SIZES AVAILABLE ON REQUEST.
2. OAL IS BASED ON STD. 3" PIPE WELD NECK LENGTH. FOR OTHER OPTIONAL LENGTHS PLEASE PROVIDE THEM IN THE SPECIFICATION SHEET.
3. PIPE END MATERIAL: ASTM A106 B. FOR OTHER OPTIONAL MATERIAL PLEASE CONTACT BSI.
4. BELLOW MATERIAL: ASTM A-240 GRADE 321. OTHER MATERIALS (STAINLESS STEELS, NICKEL ALLOYS ETC.) ARE AVAILABLE ON REQUEST.
5. AVAILABLE IN 1 PLY, 2 PLY (STD) OR 3 PLY DESIGNS.
6. SPECIFY DESIGN/OPERATION PRESSURE & TEMPERATURE IN PAGE 2.
7. FOR MOVEMENTS AND LIFE CYCLE REFER TO BELLOWS CATALOG OR CONTACT BSI ENGINEERING.

				 <b>Bellows Systems</b> CAGE CODE: 22727		BELLOWS SYSTEMS, INC. Houston, TX www.bellows-systems.com	
						SINGLE EXPANSION JOINT STD. TYPE SU-00 W/ PIPE ENDS (BWE)	
REV.	DESCRIPTION	DATE:	BY:	CHKD:	APPD:	DRAWING NUMBER:	130-CAT-0000
F	UPDATED TYPE NO.	11/8/2023	UG				
E	UPDATED TABLE	09/15/2023	UG				
D	UPDATED TABLE & NOTES	09/08/2023	UG				
THIS DRAWING AND ALL OF THE INFORMATION HEREIN ARE THE SOLE PROPERTY OF BELLOWS SYSTEMS, INC. AND MAY NOT BE REPRODUCED OR DISTRIBUTED WITHOUT THE EXPRESS WRITTEN CONSENT OF BELLOWS SYSTEMS, INC. (BSI).				SHEET SIZE: 8.5" x 11"	DRAWN BY: U GULATI	DATE: 12/16/2022	SCALE: AS SHOWN
						SHEET#: 1 OF 2	REV. F



		1	2	3	4
<b>DIM.:</b>	PIPE/ NOMINAL SIZE:				
	OVERALL LENGTH (OAL):				
<b>DESIGN:</b>	PRESSURE:				
	TEMPERATURE:				
<b>MOV. &amp; LIFE CYLS:</b>	AXIAL COMPRESSION:				
	AXIAL EXPANSION:				
	LATERAL:				
	ANGULAR:				
	NO. OF CYCLES:				
<b>MAT'L'S:</b>	①, BELLOWS:				
	②, PIPE ENDS:				
<b>DESIGN CODES/STANDARDS:</b> (EJMA/ ASME SECT VII DIV I/ ASME B 31.1/ ASME B 31.3)					
<b>APPLICATION NOTES:</b>					
<b>QUANTITY:</b>					

**OPTIONAL FEATURES:**

1. FLOW LINER (SEE TYPE-20).
2. EXTERNAL COVER.

						<b>BELLOWS SYSTEMS, INC.</b> Houston, TX <a href="http://www.bellows-systems.com">www.bellows-systems.com</a>	
CAGE CODE: 22727						SINGLE EXPANSION JOINT TYPE SU-00 SPECIFICATION SHEET	
REV.	DESCRIPTION	DATE:	BY:	CHKD:	APPD:	DRAWING NUMBER:	130-CAT-0000
F	UPDATED TYPE NO.	11/8/2023	UG				
E	UPDATED TABLE	09/15/2023	UG				
D	UPDATED TABLE & NOTES	09/08/2023	UG				
THIS DRAWING AND ALL OF THE INFORMATION HEREIN ARE THE SOLE PROPERTY OF BELLOWS SYSTEMS, INC. AND MAY NOT BE REPRODUCED OR DISTRIBUTED WITHOUT THE EXPRESS WRITTEN CONSENT OF BELLOWS SYSTEMS, INC. (BSI).		SHEET SIZE: 8.5" x 11"	DRAWN BY: U GULATI	DATE: 01/12/2023	SCALE: AS SHOWN	SHEET#: 2 OF 2	REV. F