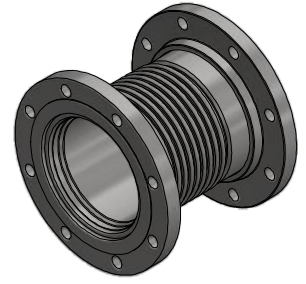
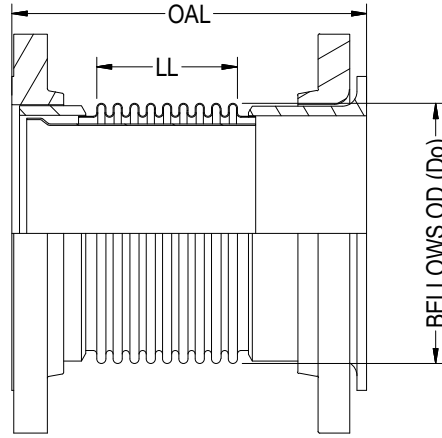


TYPE SU-35



ISOMETRIC VIEW

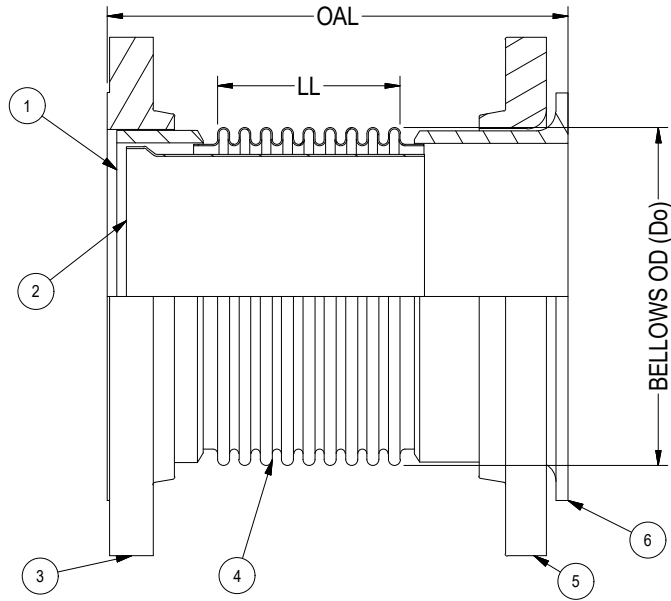
PIPE SIZE	BELLOWS OD (Do)	LIVE LENGTH (LL)	OVERALL LENGTH (OAL)
1	1.60	1.86	6.00
1.25	1.80	1.80	6.00
2	2.40	7.04	12.00
2	2.40	11.06	16.00
2	2.45	15.03	20.00
2.5	3.00	1.95	7.00
2.5	3.00	6.89	12.00
2.5	3.00	10.88	16.00
2.5	3.00	14.88	20.00
3	3.80	1.84	7.00
3	3.80	6.80	12.00
3	3.80	10.79	16.00
3	3.50	14.87	20.00
3.5	4.30	1.35	7.00
3.5	4.30	6.26	12.00
3.5	4.30	10.25	16.00
3.5	4.20	14.21	20.00
4	4.50	1.29	7.00
4	4.70	6.25	12.00
4	4.70	10.14	16.00
4	4.70	14.17	20.00
5	5.70	1.18	7.00
5	6.00	6.08	12.00
5	5.90	10.04	16.00
5	6.00	13.98	20.00
6	6.90	5.44	12.00

PIPE SIZE	BELLOWS OD (Do)	LIVE LENGTH (LL)	OVERALL LENGTH (OAL)
6	6.90	9.42	16.00
6	6.80	13.38	20.00
8	8.80	4.75	12.00
8	8.80	8.74	16.00
8	8.80	12.74	20.00
10	10.90	3.62	12.00
10	10.90	7.57	16.00
10	10.90	11.53	20.00
12	12.80	2.43	12.00
12	12.80	6.37	16.00
12	12.80	10.33	20.00
14	14.30	2.38	12.00
14	14.30	6.27	16.00
14	14.30	10.26	20.00
16	16.20	2.06	12.00
16	16.20	6.06	16.00
16	16.20	10.03	20.00
18	18.20	1.89	12.00
18	18.20	5.79	16.00
18	18.20	9.84	20.00
20	20.30	1.72	12.00
20	20.30	5.70	16.00
20	20.30	9.66	20.00
24	24.30	1.35	12.00
24	24.30	5.36	16.00
24	24.30	9.34	20.00

NOTES:

1. FLANGES ARE OF 150# RFSO. (ANSI B16.5 BOLT PATTERN)
2. FLANGE MATERIAL: ASTM A-105. FOR OTHER OPTIONAL MATERIAL PLEASE CONTACT BSI.
3. PIPE WELD END WALL THICKNESS IS BASED ON STD./SCH. ALTERNATIVE SIZES AVAILABLE ON REQUEST.
4. PIPE END MATERIAL: ASTM A106 B. FOR OTHER OPTIONAL MATERIAL PLEASE CONTACT BSI.
5. LAP JOINT STUB END MATERIAL: ASTM A-36. FOR OTHER OPTIONAL MATERIAL PLEASE CONTACT BSI.
6. OAL IS BASED ON LIVE LENGTH. FOR OTHER OPTIONAL LENGTH PLEASE PROVIDE THEM IN THE SPECIFICATION SHEET.
7. BELLOW MATERIAL: ASTM A-240 GRADE 304. OTHER MATERIALS (STAINLESS STEEL, NICKEL ALLOYS ETC.) ARE AVAILABLE ON REQUEST.
8. AVAILABLE IN 1 PLY, 2 PLY (STD) OR 3 PLY DESIGNS.
9. SPECIFY DESIGN/OPERATING PRESSURE & TEMPERATURE IN PAGE 2.
10. FOR MOVEMENTS AND LIFE CYCLE REFER TO BELLOWS CATALOG OR CONTACT BSI ENGINEERING.

				 Bellows Systems		BELLOWS SYSTEMS, INC. Houston, TX www.bellows-systems.com	
						SINGLE EXPANSION JOINT STD. TYPE SU-35 W/ LINER, 150# RFSO FIXED & FLOATING FLG	
REV.	DESCRIPTION	DATE:	BY:	CHKD:	APPD:	CAGE CODE: 22727	
F	UPDATED TYPE NO.	11/8/2023	UG				
E	UPDATED NOTES	09/12/2023	UG				
THIS DRAWING AND ALL OF THE INFORMATION HEREIN ARE THE SOLE PROPERTY OF BELLOWS SYSTEMS, INC. AND MAY NOT BE REPRODUCED OR DISTRIBUTED WITHOUT THE EXPRESS WRITTEN CONSENT OF BELLOWS SYSTEMS, INC. (BSI).				SHEET SIZE: 8.5" x 11"	DRAWN BY: U GULATI	DATE: 03/02/2023	SCALE: AS SHOWN
						DRAWING NUMBER: 130-CAT-0035	SHEET#: 1 OF 2
						REV. F	



		1	2	3	4
DIM.:	PIPE/ NOMINAL SIZE:				
	OVERALL LENGTH (OAL):				
DESIGN:	PRESSURE:				
	TEMPERATURE:				
MOV. & LIFE CYLS:	AXIAL COMPRESSION:				
	AXIAL EXPANSION:				
	LATERAL:				
	ANGULAR:				
MAT'L'S:	① PIPE END:				
	② LINER:				
	③ FLANGE:				
	④ BELLOWS:				
	⑤ LAP JOINT FLANGE:				
	⑥ STUB END:				
DESIGN CODES/STANDARDS: (EJMA/ ASME SECT VII DIV I/ ASME B 31.1/ ASME B 31.3)					
APPLICATION NOTES:					
QUANTITY:					

OPTIONAL FEATURES:

- WITHOUT FLOW LINER (SEE TYPE-05).
- CONTROL RODS (SEE TYPE-45).
- EXTERNAL COVER.

				 Bellows Systems		BELLOWS SYSTEMS, INC. Houston, TX www.bellows-systems.com	
						SINGLE EXPANSION JOINT TYPE SU-35 SPECIFICATION SHEET	
F	UPDATED TYPE NO.	11/8/2023	UG	CAGE CODE: 22727		DRAWING NUMBER: 130-CAT-0035	
E	UPDATED NOTES	09/12/2023	UG			SHEET#: 2 OF 2	
REV.	DESCRIPTION	DATE:	BY:	CHKD:	APPD:	REV. F	
<small>THIS DRAWING AND ALL OF THE INFORMATION HEREIN ARE THE SOLE PROPERTY OF BELLOWS SYSTEMS, INC. AND MAY NOT BE REPRODUCED OR DISTRIBUTED WITHOUT THE EXPRESS WRITTEN CONSENT OF BELLOWS SYSTEMS, INC. (BSI).</small>				SHEET SIZE: 8.5" x 11"	DRAWN BY: U GULATI	DATE: 03/02/2023	SCALE: AS SHOWN